



The Derby is The Maximum of Motor Car Value
A New NAME---NOT a New CAR

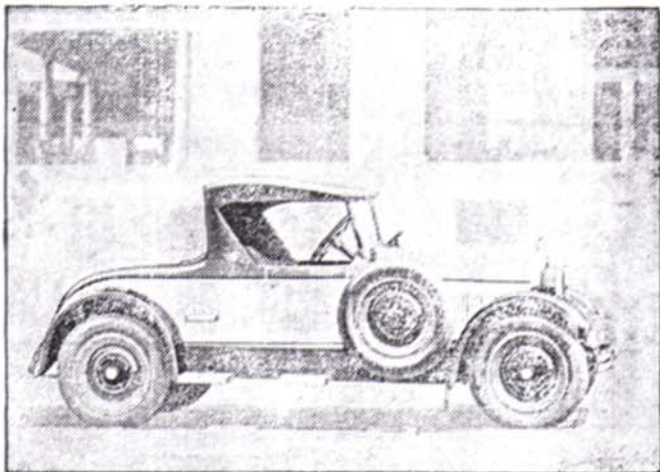
DERBY

MOTOR CARS

*A Car with "CHIC" and "DASH"---
Graceful and Distinctive Lines---Powerful---
Comfort Beyond Words---Economy
---Is an Ideal Car for Women to Drive*

Standard Car Standard Units

Continental Red Seal Motor--Timken Axles--Timken Bearings--Eorg and Beck Clutch--Delco--Warner--Peters-- Balloon Tires--Lockheed Hydraulic Four Wheel Brakes -- *(the BEST braking system in the world)*--Disteel Disc Wheels -- Ross Cam and Lever Steering Gear.



The Mountaineer Roadster

An Unsolicited Testimonial

"My car is still running, same as new, Speedometer now shows 11,898 miles. Have not spent a nickel on it so far."

We Can Make Immediate Delivery of Cars

Snap and Style All Over

Now Mr. Dealer, and Mr. Prospective Buyer, would you not rather sell or buy a car that becomes more firmly entrenched in the good graces of its owner the longer he drives it?

If you are interested in building a business on a solid foundation of repeat orders, write for details of the Derby Sales Franchise.

DERBY MOTOR CARS LIMITED
SASKATOON, CANADA